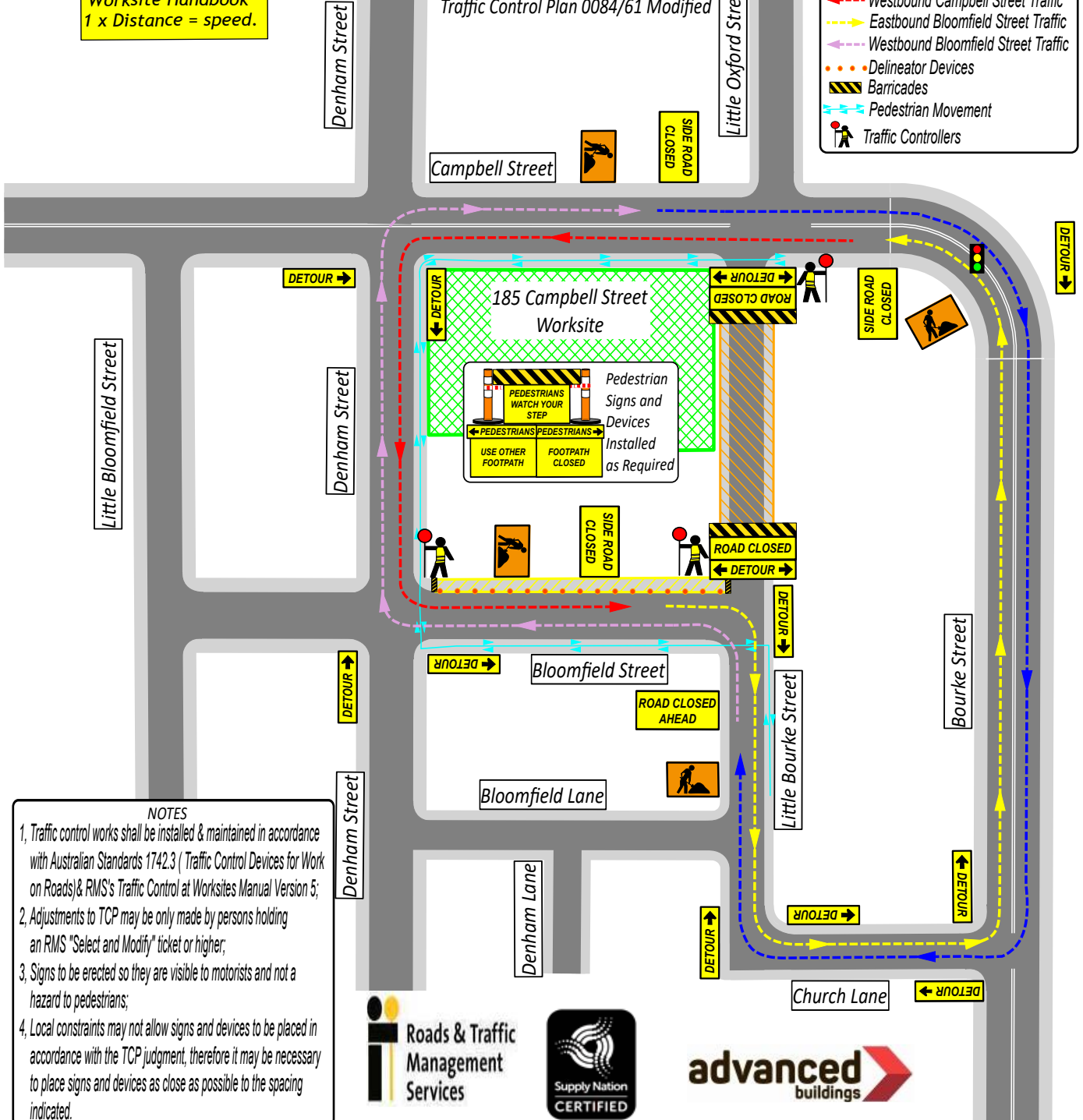


All advanced warning signs to be spaced as per RMS Roadwork on Worksite Handbook 1 x Distance = speed.

PLAN NOT TO SCALE
 185 Campbell Street, Surry Hills
 Crane Lift of Construction Materials
 Closure of Little Bourke Street and;
 Footpath Closure on Bloomfield Street
 Traffic Control Plan 0084/61 Modified

Legend :

- Worksite
- Road Closure
- Footpath Closure
- Eastbound Campbell Street Traffic
- Westbound Campbell Street Traffic
- Eastbound Bloomfield Street Traffic
- Westbound Bloomfield Street Traffic
- Delineator Devices
- Barricades
- Pedestrian Movement
- Traffic Controllers



- NOTES**
- 1, Traffic control works shall be installed & maintained in accordance with Australian Standards 1742.3 (Traffic Control Devices for Work on Roads) & RMS's Traffic Control at Worksites Manual Version 5;
 - 2, Adjustments to TCP may be only made by persons holding an RMS "Select and Modify" ticket or higher;
 - 3, Signs to be erected so they are visible to motorists and not a hazard to pedestrians;
 - 4, Local constraints may not allow signs and devices to be placed in accordance with the TCP judgment, therefore it may be necessary to place signs and devices as close as possible to the spacing indicated.



Roads & Traffic Management Services (RTMS)
 Evan Ng lam
 Operations Manager
 17 Garner Place
 Ingelburn NSW 2565
 Ph: (02) 9426 3407
 Mob: 0410 431 114
 E: rtmp.traffic@gmail.com
 Lic: 0052055562
 Expiry Date: 24/06/2022
 Author: Evan Ng lam

Date: 21/01/2020 **Author:** Evan Ng lam **Project:** 185 Campbell Street, Surry Hills. Road Closure on Little Bourke Street & Footpath for EWP Works

Comments: PLAN NOT TO SCALE 0084/61 Modified
 Proposed rectification and repair works to 185 Campbell Street, Surry Hill worksite requires the closure of Little Bourke St between Campbell St and Bloomfield St to enable mobile elevated work platforms access to lift roof sheets and gain roof access for rectification works to proceed. Also requires closure of the northern footpath on Bloomfield Street between Denham Street and Little Bourke Street for standing Elevated Work Platforms (EWP's) to undertake works. As safety precaution, closure of Little Bourke Street incase of falling objects from scaffolding. Traffic controllers to implement TCP Detour signage and redirect pedestrians around the work area as required.
 RMS Certified Traffic Controllers will implement and monitor this Traffic Control Plan.
 (1) Traffic Controllers to manage traffic and pedestrian movement.
 (2) Traffic Controllers to be vigilance of surroundings of traffic & pedestrian movements during this activity.
 (3) Traffic Controllers to communicate via radio where required.